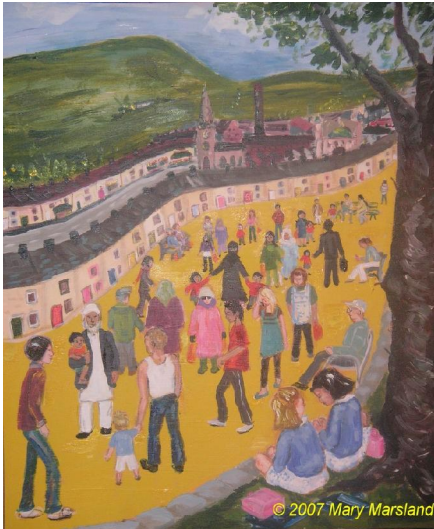


The different levels of the painting – teacher guidance

As the artist, Mary Marstrand, explains, the painting can be viewed at different levels and used to prompt discussion with students about the issues of multi-culturalism:



- Explain that the painting is in the style of Lowry who painted society as he saw it in the early 20th Century. His paintings (see 2 examples above right) are set in Northern England and he is famous for his “matchstick men.”
- Compare the paintings to help discuss changes in society. Mary’s painting is also set in Northern England in Burnley, Lancashire. Like Lowry, she paints people as she sees them.
- Encourage students to look more closely and notice parallel figures e.g. the woman wearing a veil and the woman wearing a hat and sunglasses; the woman wearing overalls and trousers and the woman wearing Asian style trousers and top, etc.
- Prompt students to notice cultural mixes such as the older man holding his grandson wearing a turban and a tweed jacket
- Ask students if they see anyone communicating in the painting. In fact, only the two schoolchildren in the foreground are talking to each other. Perhaps there is a message here about young people being the ones who can really help build a multi-cultural society?
- Now move away from the people and look at the setting. There is a church and a mosque in the background. Also a derelict mill (link back to Lowry). The road is bright yellow rather than black as a positive sign – we are all walking down the same road and are all different.